



## WX5600-T0

### Dual-Band Wireless AX6000 2.5G Extender

The Zyxel WX5600-T0 Dual-Band Wireless AX6000 2.5G Extender enables carrier-grade performance. As a key component of the Zyxel MPro Mesh® Solutions, the WX5600-T0 delivers smooth data streaming and seamless roaming for whole-home WiFi coverage.

### Benefits

#### WiFi 6 technology for superior lag-free performance

Supporting the latest WiFi 6 (11ax) standard, the WX5600-T0 delivers speeds up to 4800 Mbps\* with 5 GHz 4x4 802.11ax and 1200 Mbps\* with 2.4 GHz 4x4 802.11ax. The uplink MU-MIMO, Orthogonal Frequency Division Multiple Access (OFDMA) and beamforming technologies empower WX5600-T0 to deliver premium speed for multi-streaming data access and optimal WiFi experiences without dead zones.

#### Premium MPro Mesh® for whole-home WiFi coverage

Featuring EasyMesh fully compliant Zyxel MPro Mesh® Solutions\*\*, the WX5600-T0 enhances your subscribers' experience by providing self-adapting, easy-to-manage whole-home WiFi coverage while reducing your service OPEX.

#### Seamless whole-home fiber-grade service

With two 2.5GbE LAN ports, the WX5600-T0 works seamlessly with any 2.5GbE WiFi 6 gateways to extend the reach of a premium WiFi network anywhere in your customers' homes, satisfying their demands for bandwidth-intensive applications.

Datasheet [WX5600-T0](#)



WiFi 6 (11ax) 4x4+4x4 for superior performance and coverage



Zyxel MPro Mesh® Solutions (compliant with EasyMesh R3 standards)



2.5GbE LAN ports for optimized bandwidth utilization



Remote management via R-069 and TR-181



Zyxel-developed OPAL for superior flexibility and faster time to market

## TR-069/TR-181 remote management for lower OPEX

Compliant with TR-069/TR-181 standards, the WX5600-T0 significantly simplifies deployment complexity and lowers operating and maintenance costs with its remote management capabilities.

## Zyxel OPAL firmware achieves superior flexibility and shortens time to market

Compliant with the same OPAL firmware trunk applied to all Zyxel CPEs, the WX5600-T0 inherits a rich, field-proven feature set for guaranteed same user experience after migrating to new devices.

## Specifications

### System specifications

#### Wireless standards

- IEEE 802.11 a/n/ac/ax 5 GHz
- IEEE 802.11 b/g/n/ax 2.4 GHz

#### Wireless speed

- Transmit/receive
  - 4800 Mbps\* for 5 GHz
  - 1200 Mbps\* for 2.4 GHz

#### Wireless security

- WPA2-PSK/WPA3-SAE

#### Wireless features

- Auto channel selection
- MU-MIMO and beamforming
- Video-grade QoS
- WiFi Protected Setup (WPS)
- WiFi Multimedia (WMM)
- MAC address filtering
- Multiple SSIDs up to 4
- AP/band steering

#### System management

- HTTP/GUI
- TR-069/TR-181 remote management
- Remote firmware upgrade
- Dual images system recovery
- DHCP client and IGMP snooping
- MPro Mesh® management

#### Operation mode

- AP/repeater

#### MPro Mesh® management

- Pre-associated steering
- 5G/2.4G band steering
- Multi-AP roaming
- Band balancing
- Backhaul optimal

### Hardware specifications

#### LAN

- Two 2.5GbE RJ-45 ports with auto MDI/MDIX support

#### Wireless

- 5 GHz: four internal antennas
- 2.4 GHz: four internal antennas

#### Buttons

- Power on/off
- Reset
- WPS

#### LED indicators

- Power/system status
- Backhaul link quality
- WiFi
- WPS

### Power consumption

- 12 V DC 1.5 A
- 18 Watt max

### Physical specifications

- Item dimensions (WxDxH):  
128 x 40 x 128 mm  
(5.03" x 1.57" x 5.03")
- Item weight: 307.8 g (0.67 lb.)
- Packing dimensions (WxDxH):  
261 x 136.5 x 44 mm  
(10.27" x 5.35" x 1.73")
- Packing weight: 619.8 g (1.37 lb.)

### Environmental specifications

#### Operating environment

- Temperature:  
0°C to 40°C (32°F to 104°F)
- Humidity:  
10% to 90% (Non-condensing)

#### Storage environment

- Temperature:  
-30°C to 70°C (-22°F to 158°F)
- Humidity:  
10% to 95% (Non-condensing)

### Certification

- CE
- Safety
- ErP

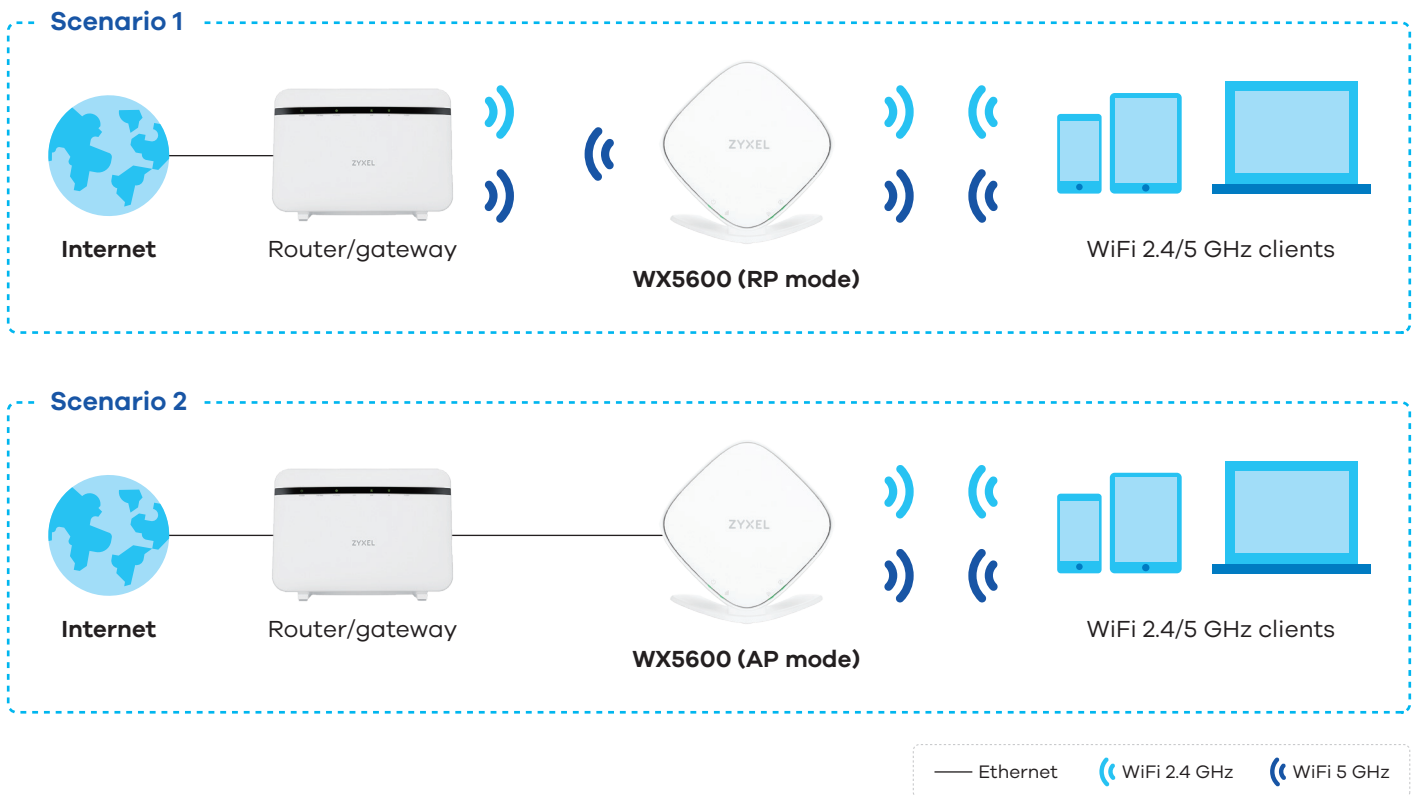
### Package contents

- Wireless extender
- Power adapter
- Ethernet cable
- Quick Start Guide

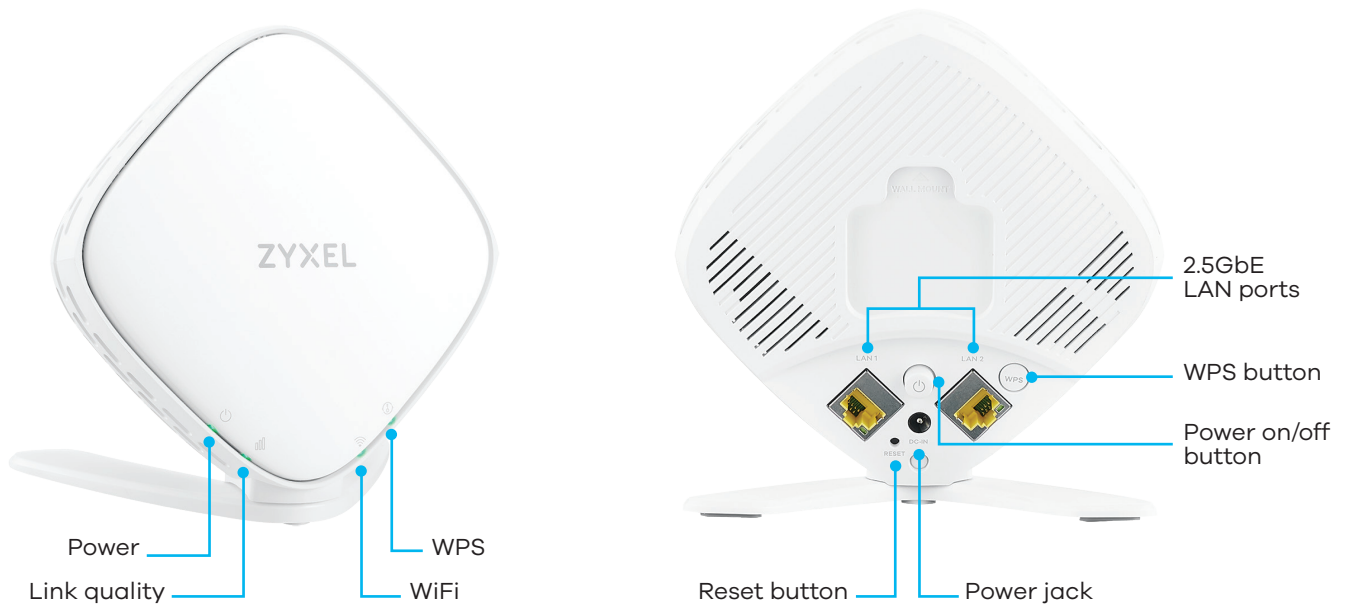
\* The maximum wireless data is derived from IEEE standard 802.11 specifications. Actual data transfer rate will vary from network environment including: distance, network traffic, building site materials/construction, interference from other wireless devices, and other adverse conditions.

\*\* Combining WX5600-T0 with the same Wireless Extender is advised for the ideal mesh network performance. Please contact us for detailed mesh function availability.

## Application diagram



## Hardware interface





For more product information, visit us on the web at <https://service-provider.zyxel.com>

Copyright © 2022 Zyxel and/or its affiliates. All rights reserved.  
All specifications are subject to change without notice.



Datasheet [WX5600-T0](#)



16/09/22