

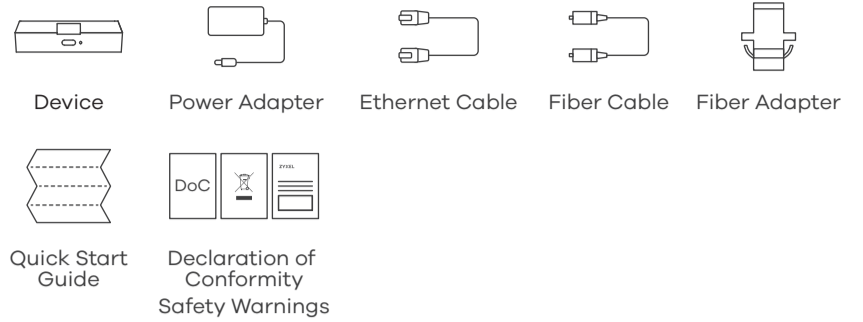
AM3100-B0

Gigabit Active Fiber Gateway



Quick Start Guide

Package Contents



See the User's Guide at www.zyxel.com for more information, including customer support and safety warnings.

EU Importer

Zyxel Communications A/S
Gladsaxevej 378, 2. th. 2860 Søborg, Denmark
<https://www.zyxel.com/dk/da/>

US Importer

Zyxel Communications, Inc
1130 North Miller Street Anaheim, CA 92806-2001
<https://www.zyxel.com/us/en/>

Copyright © 2020 Zyxel Communications Corp. All Rights Reserved.

Hardware Connection

1

AM3100-B0 Fiber Box

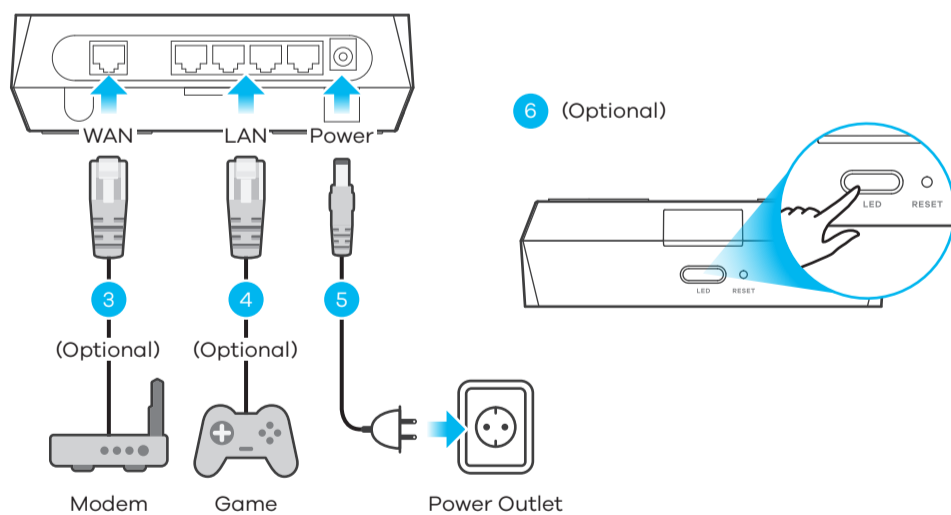
Warning! Do NOT open the fiber box. Opening the fiber box could damage the fiber optic cable. ONLY qualified service personnel should service or disassemble the fiber box. Contact your ISP for further information.

2

Remove the dust caps from the AM3100-B0 fiber connectors. If the fiber connectors in the fiber box have dust caps, remove them.

Warning! If the fiber connector of the fiber box is facing down, do NOT fix the AM3100-B0 to the fiber box. The AM3100-B0 will fall. Contact your ISP.

- EN**
- ① Find the fiber box indoors.
 - ② Slide the AM3100-B0 down the fiber box gently to fix the AM3100-B0 into place, so the fiber optic cable connects to the AM3100-B0.
 - ③ Use an Ethernet cable to connect the WAN port to a gateway modem (optional).
 - ④ Connect a computer to the LAN port using the yellow Ethernet cable (optional).
 - ⑤ Use the included power adapter to connect the power socket to a power outlet.
 - ⑥ Press the LED button to turn on/off the LEDs (optional).



Power	<p>Green On - Power on and system ready.</p> <p>Red Blinking - Firmware upgrade in progress.</p> <p>Red On - System failure.</p> <p>Off - Power off.</p>
Fiber	<p>Green On - Fiber connection ready.</p> <p>Off - Not receiving optical signals normally.</p>
WAN	<p>Green On - WAN connection ready.</p> <p>Off - No WAN connection.</p>
Internet	<p>Green On - In Routing mode and WAN connection is up.</p> <p>Off - Physical WAN connection is down or in Bridge mode.</p>
LAN	<p>Green Blinking - Transmitting data via LAN.</p> <p>Green On - LAN connection ready.</p>

Note: If none of the LEDs turn on, press the LED button to turn on the LEDs.